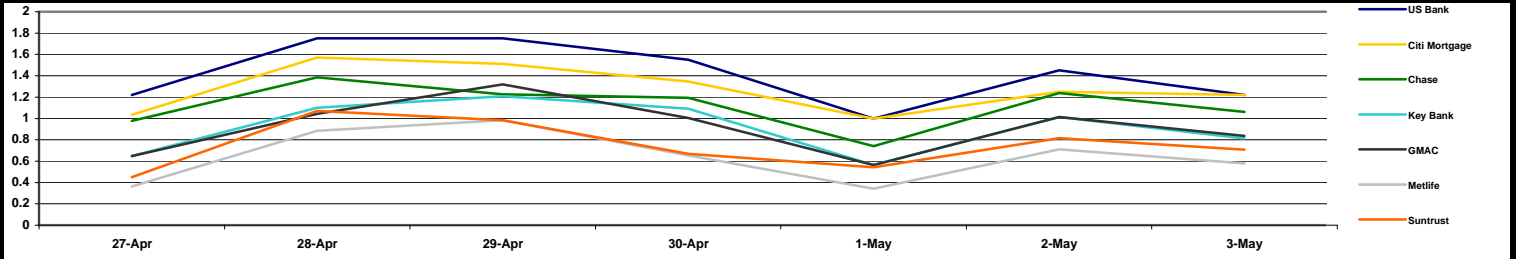
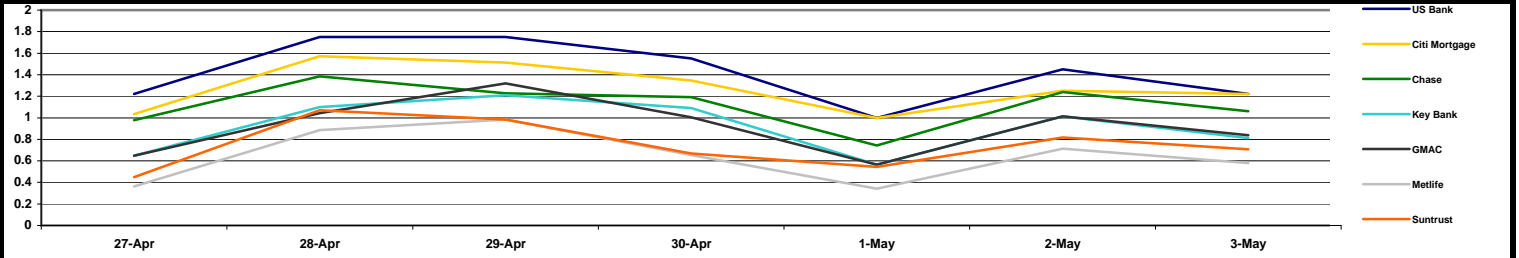


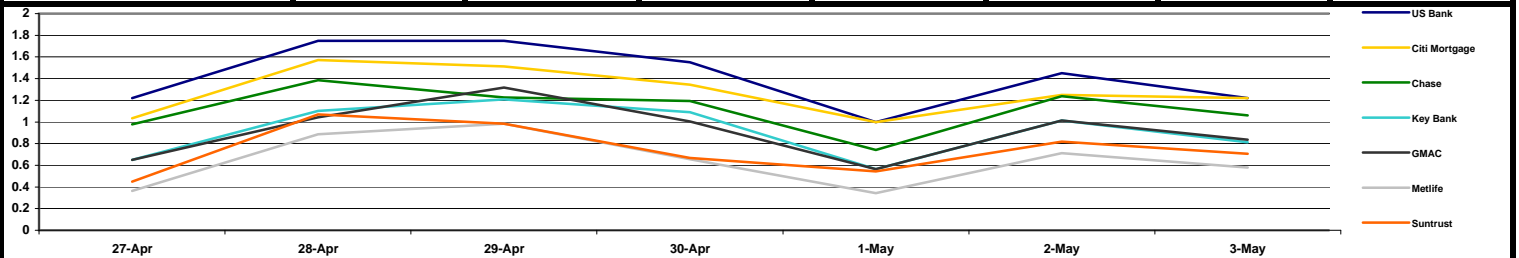
Monday, May 03, 2010			Average 1 Day Change	Average 2 Day Change	Average 7 Day Change		
Average 30 Year Conforming par rate today is 5.125%			-0.242	-0.348	-0.254		
30 Year Fixed Conforming	3-May	2-May	1-May	30-Apr	29-Apr	28-Apr	27-Apr
US Bank	0.000	↓ -0.158	↓ -0.250	↑ 0.025	↓ -0.258	↑ 0.128	↓ -0.158
Citi Mortgage	↓ -0.200	↓ -0.012	↓ -0.225	0.000	↓ -0.301	↑ 0.105	↓ -0.220
Chase	0.000	↓ -0.258	↓ -0.178	0.000	↓ -0.221	↑ 0.201	↓ -0.018
Key Bank	↓ -0.205	↓ -0.152	↓ -0.103	↓ -0.085	↓ -0.350	↑ 0.014	↓ -0.132
GMAC	↓ -0.238	↓ -0.286	↓ -0.017	↑ 0.110	↓ -0.335	0.000	↓ -0.158
Metlife	↓ -0.179	↓ -0.185	↓ -0.285	↓ -0.058	↓ -0.158	↑ 0.184	0.000
Suntrust	↓ -0.185	↓ -0.058	↓ -0.328	0.000	↓ -0.285	↑ 0.085	↓ -0.188
Bank of America	↓ -0.306	0.000	↓ -0.298	0.000	↓ -0.217	↑ 0.015	↓ -0.225



30 Year Fixed FHA	3-May	2-May	1-May	30-Apr	29-Apr	28-Apr	27-Apr
US Bank	0.000	↓ -0.158	↓ -0.250	↑ 0.025	↓ -0.258	↑ 0.128	↓ -0.158
Citi Mortgage	↓ -0.200	↓ -0.012	↓ -0.225	0.000	↓ -0.301	↑ 0.105	↓ -0.220
Chase	0.000	↓ -0.258	↓ -0.178	0.000	↓ -0.221	↑ 0.201	↓ -0.018
Key Bank	↓ -0.205	↓ -0.152	↓ -0.103	↓ -0.085	↓ -0.350	↑ 0.014	↓ -0.132
GMAC	↓ -0.238	↓ -0.286	↓ -0.017	↑ 0.110	↓ -0.335	0.000	↓ -0.158
Metlife	↓ -0.179	↓ -0.185	↓ -0.285	↓ -0.058	↓ -0.158	↑ 0.184	0.000
Suntrust	↓ -0.185	↓ -0.058	↓ -0.328	0.000	↓ -0.285	↑ 0.085	↓ -0.188
Bank of America	↓ -0.306	0.000	↓ -0.298	0.000	↓ -0.217	↑ 0.015	↓ -0.225



15 Year Fixed Conforming	3-May	2-May	1-May	30-Apr	29-Apr	28-Apr	27-Apr
US Bank	0.000	↓ -0.158	↓ -0.250	↑ 0.025	↓ -0.258	↑ 0.128	↓ -0.158
Citi Mortgage	↓ -0.200	↓ -0.012	↓ -0.225	0.000	↓ -0.301	↑ 0.105	↓ -0.220
Chase	0.000	↓ -0.258	↓ -0.178	0.000	↓ -0.221	↑ 0.201	↓ -0.018
Key Bank	↓ -0.205	↓ -0.152	↓ -0.103	↓ -0.085	↓ -0.350	↑ 0.014	↓ -0.132
GMAC	↓ -0.238	↓ -0.286	↓ -0.017	↑ 0.110	↓ -0.335	0.000	↓ -0.158
Metlife	↓ -0.179	↓ -0.185	↓ -0.285	↓ -0.058	↓ -0.158	↑ 0.184	0.000
Suntrust	↓ -0.185	↓ -0.058	↓ -0.328	0.000	↓ -0.285	↑ 0.085	↓ -0.188
Bank of America	↓ -0.306	0.000	↓ -0.298	0.000	↓ -0.217	↑ 0.015	↓ -0.225



Changes reflect an average price change between rates of -1 and 1 for each product. This report is for the sole use of the intended recipient and contains confidential and privileged information. Unauthorized disclosure, copying and/or distribution of this report and its contents is strictly prohibited. © 2010 Heitman Analytics